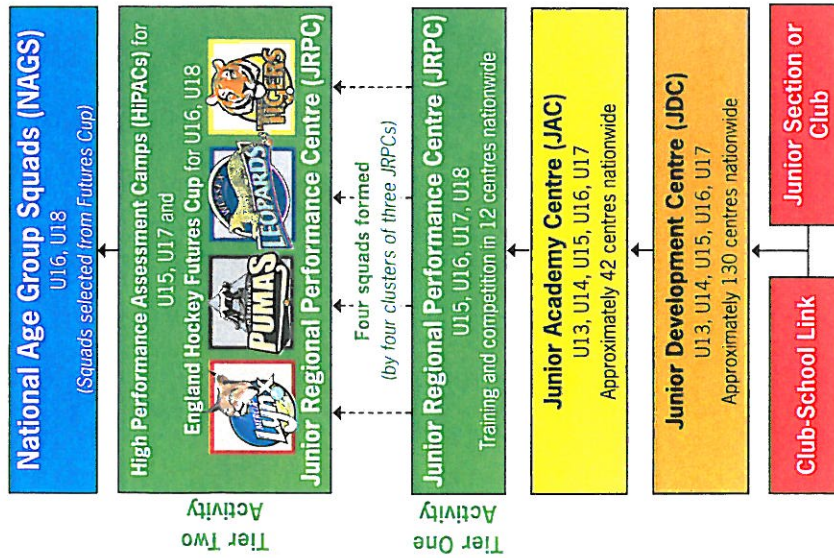


Useful Information

Under 18 Player Pathway



Club and school activity continues throughout the player pathway

Which Age Group?

Birth Year	2008-09	2009-10	2010-11
1991	Under 18s		
1992	Under 17s	Under 18s	
1993	Under 16s	Under 17s	Under 18s
1994	Under 15s	Under 16s	Under 17s
1995	Under 14s	Under 15s	Under 16s
1996	Under 13s	Under 14s	Under 15s
1997		Under 13s	Under 14s
1998			Under 13s

A guide to the acronyms

JDC	Junior Development Centre	NPC	National Performance Centre
JAC	Junior Academy Centre	CCC	Centrally Contracted Coach
JRPC	Junior Regional Performance Centre	NAGS	National Age Group Squads
HIPAC	High Performance Assessment Camp	EHFC	England Hockey Futures Cup

Your Regional Offices



SOUTH OFFICE | south@englandhockey.org

Berkshire, Buckinghamshire, Hampshire, Isle of Wight, Kent, Surrey, Sussex, Oxfordshire, 33 London Boroughs, Middlesex

T: 01628 890462 • F: 01628 890523 • M: 07725 432013

EAST OFFICE | east@englandhockey.org

Bedfordshire, Cambridgeshire, Essex, Hertfordshire, Lincolnshire, Norfolk, Suffolk

T: 01284 729354 • M: 07811 336895

NORTH OFFICE | north@englandhockey.org

Cheshire, Cumbria, East Riding & Humberside, Lancashire, Manchester, Merseyside, Northumberland, Durham, Isle of Man, North & NE Lincolnshire, Tyne & Wear, Yorkshire

T: 0113 274 0083 • M: 07725 432017

MIDLANDS OFFICE | midlands@englandhockey.org

Birmingham, Derbyshire, Worcestershire, Leicestershire & Rutland, Northamptonshire, Nottinghamshire, Shropshire, Staffordshire, Warwickshire, Black Country

T: 01509 228676 • F: 01509 228678 • M: 07515 974455

WEST OFFICE | west@englandhockey.org

Avon, Cornwall, Dorset, Devon, Gloucestershire, Herefordshire, Somerset, Wiltshire, Channel Islands

T: 01392 264031 • F: 01392 251033 • M: 07880 555915

Information specific to you

...Your guide to...
Junior Academy Centres (JACs)



ENGLAND HOCKEY
SINGLE SYSTEM
ONE VISION ONE SYSTEM

www.Englandhockey.co.uk/jac



What is a Junior Academy Centre?

A Junior Academy Centre (JAC) is a training centre for the U13 to U17 age groups. JACs are open to any hockey player who has been nominated by a Junior Development Centre (JDC) coach. After attending a JDC, a JAC is the next step on hockey's player pathway. A JDC coach can nominate a player to attend an assessment for a JAC if and when they think it is appropriate for the player's development.

Players who have previously been involved in Junior Regional Performance Centre (JRPC) Tier 2 activity may also attend JACs.



What happens at a JAC?

A JAC will provide regular training sessions where players will receive coaching on the core skills of hockey from appropriately qualified coaches. As well as training, there will be competition between local JACs. Initially, the type, level and frequency of localised competition may vary across the country as the Single System is still at the early stages of implementation.

The combination of training and competition allows players to develop in a variety of situations and ensures that they are assessed in more than just the competition environment.



Where and when are the JACs?

Players will attend whichever JAC is closest to where they live (or in the case of boarding pupils, where they attend school). There will be a minimum of one JAC in every county. Pilot activity is being run in 2008/09, but from 2009/10 JACs will run from January to April. Information about the location of JACs is available from clubs, schools, your County Association or England Hockey Regional Office and at www.englishockey.co.uk/jaclocations.



Who organises the JACs?

JACs will be run by County Hockey Associations or Hockey Development Groups who will appoint coaches and managers/administrators to organise and run all activity. The manager/administrator will be the main contact regarding nominations, dates and times of the sessions and the coaches will be responsible for the training and competition.



Is there a cost to attend a JAC?

A fee will be charged for attending training sessions and competitions.



What is the next step on the U18 Player Pathway?

Following JAC training and competition, JAC coaches will nominate players to attend Junior Regional Performance Centre (JRPC) assessment. JRPC activity will run from August through to November. For more information on JRPCs, please refer to the JRPC leaflet in this series or visit www.englishockey.co.uk/jrpc.



Other leaflets available in this series:

- * The Single System – What's it all about?
- * Junior Development Centres (JDCs)
- * **Junior Academy Centres (JACs)**
- * Junior Regional Performance Centres (JRPCs)
- * High Performance Assessment Camps (HIPACS)
- * Futures Cup (EHFC)
- * National Age Group Squads (NAGS)
- * National Performance Centres (NPCs)

You can either download the guides from the website at www.englishockey.co.uk/singlessystem or contact your England Hockey Regional Office.

Do you still have unanswered questions?

If you are still unclear about any element of the Single System for hockey, don't stay in the dark. Please contact your England Hockey Regional Office who will be happy to answer your questions, or put you in touch with the relevant people. Contact details for your Regional Office can be found on the back of this leaflet.